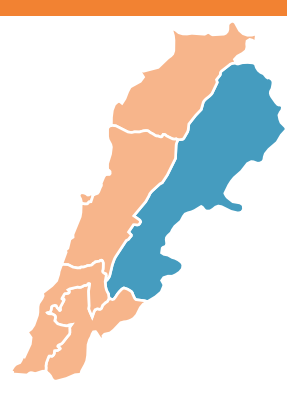


# HOW DO PEOPLE IN BEQAA, BAALBEK & HERMEL GOVERNORATES EVALUATE PUBLIC INSTITUTIONS IN LEBANON & HOW DO THEY SELF-IDENTIFY ?

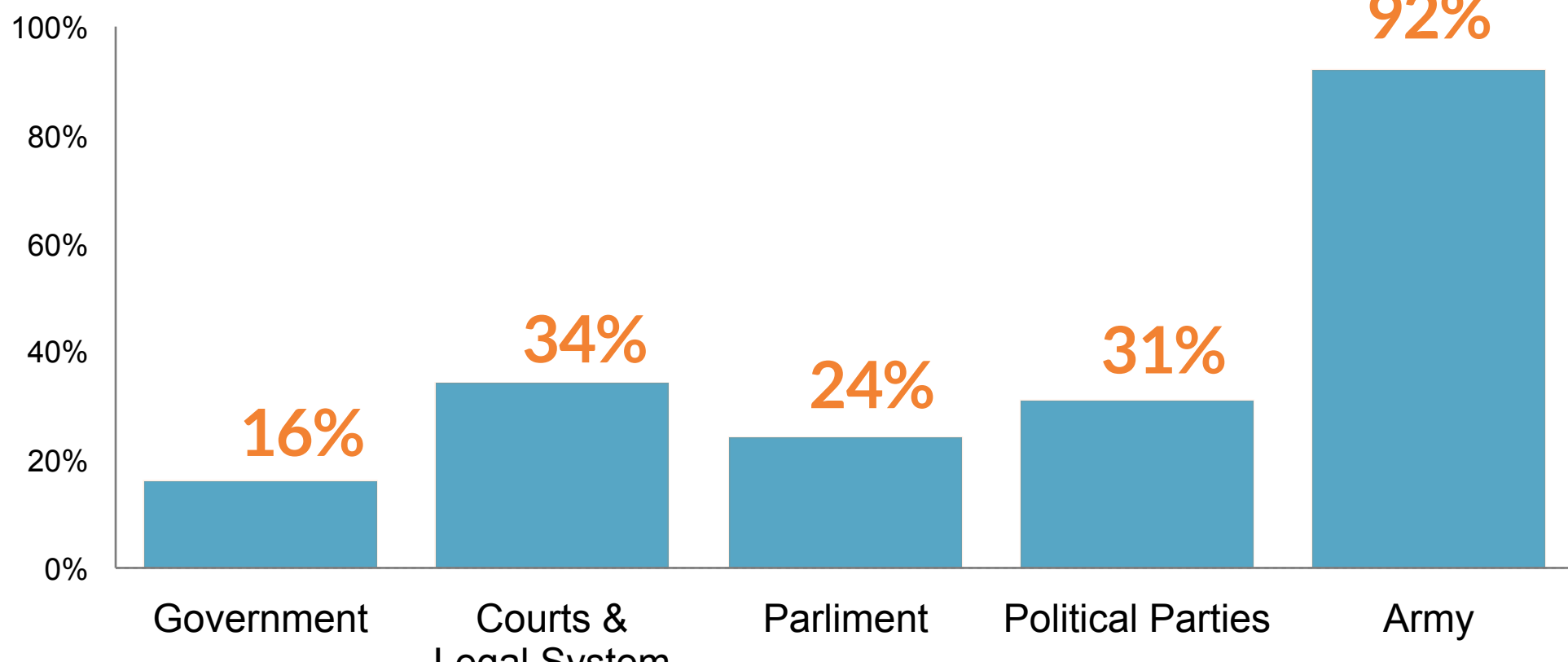


sample size = 150

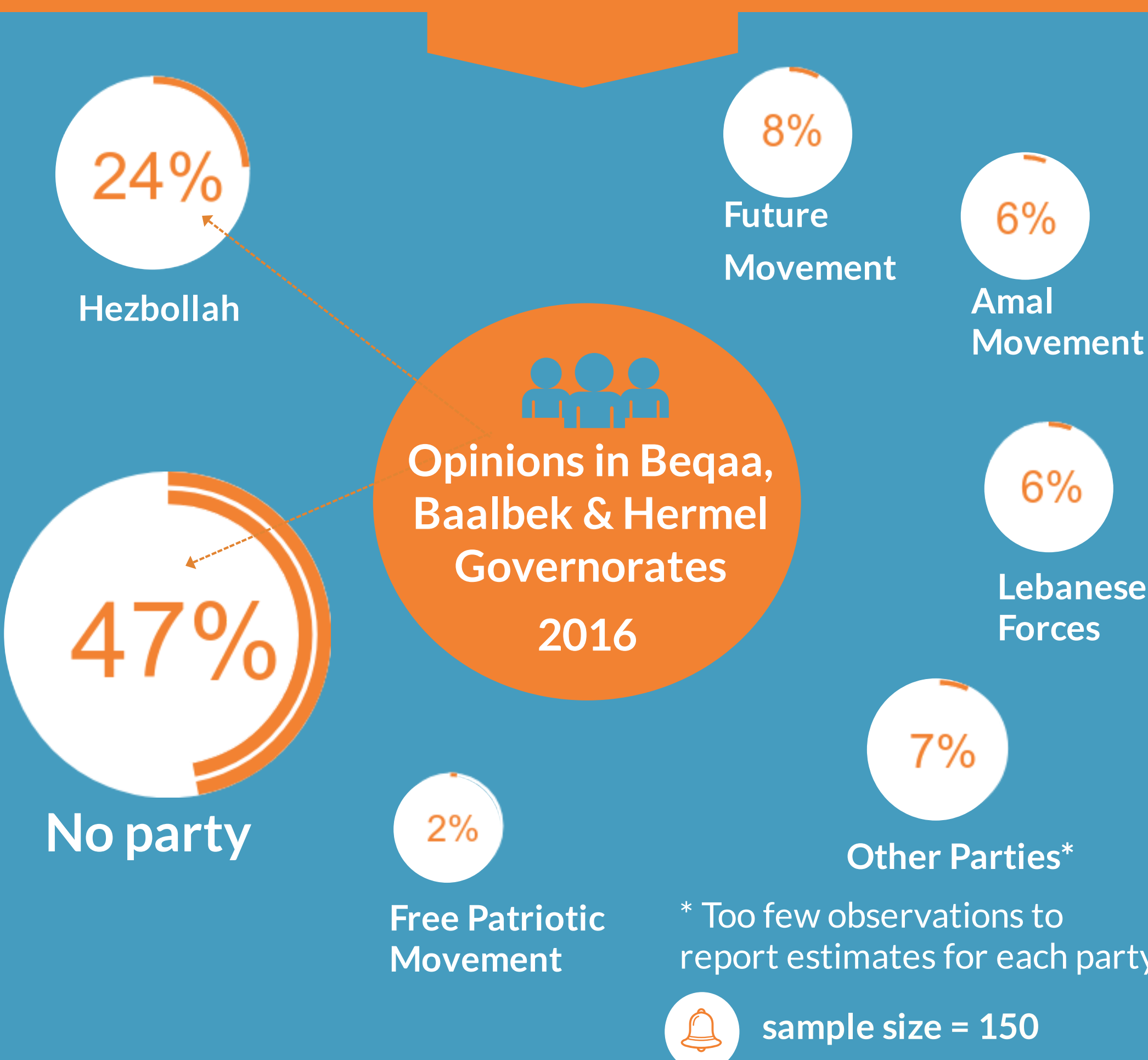
## TRUST IN PUBLIC INSTITUTIONS Opinions in Beqaa, Baalbek & Hermel Governorates - Lebanon 2016



% People in Beqaa, Baalbek & Hermel Governorate who trust public institutions - 2016



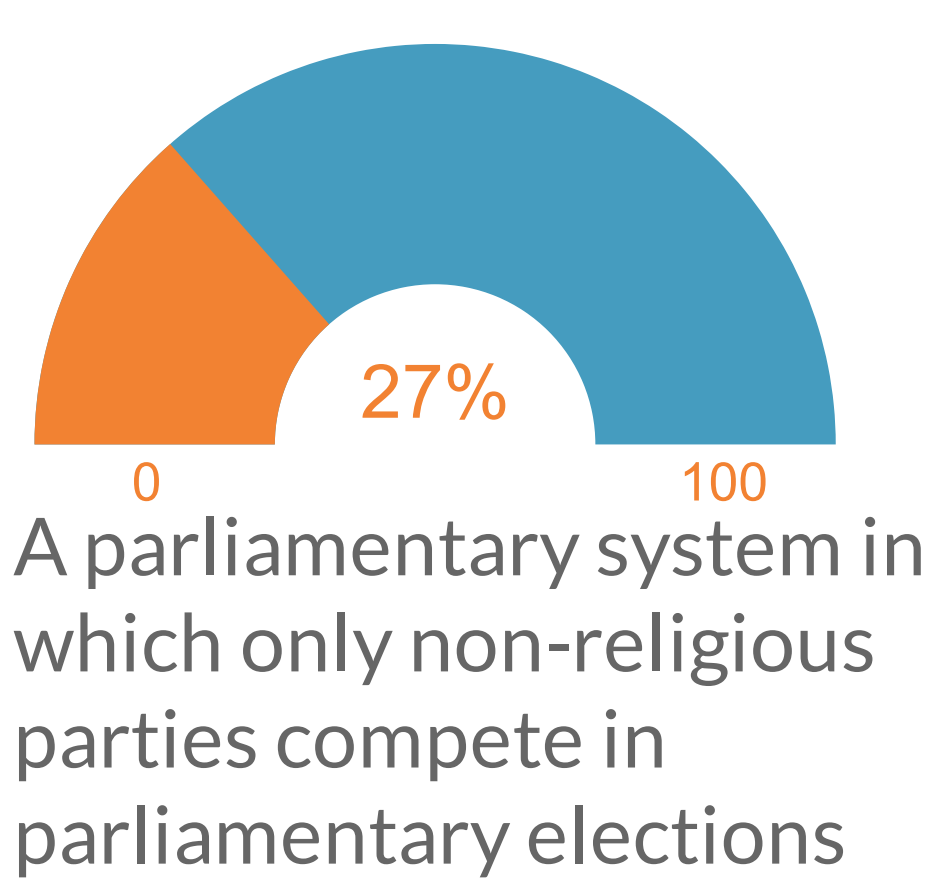
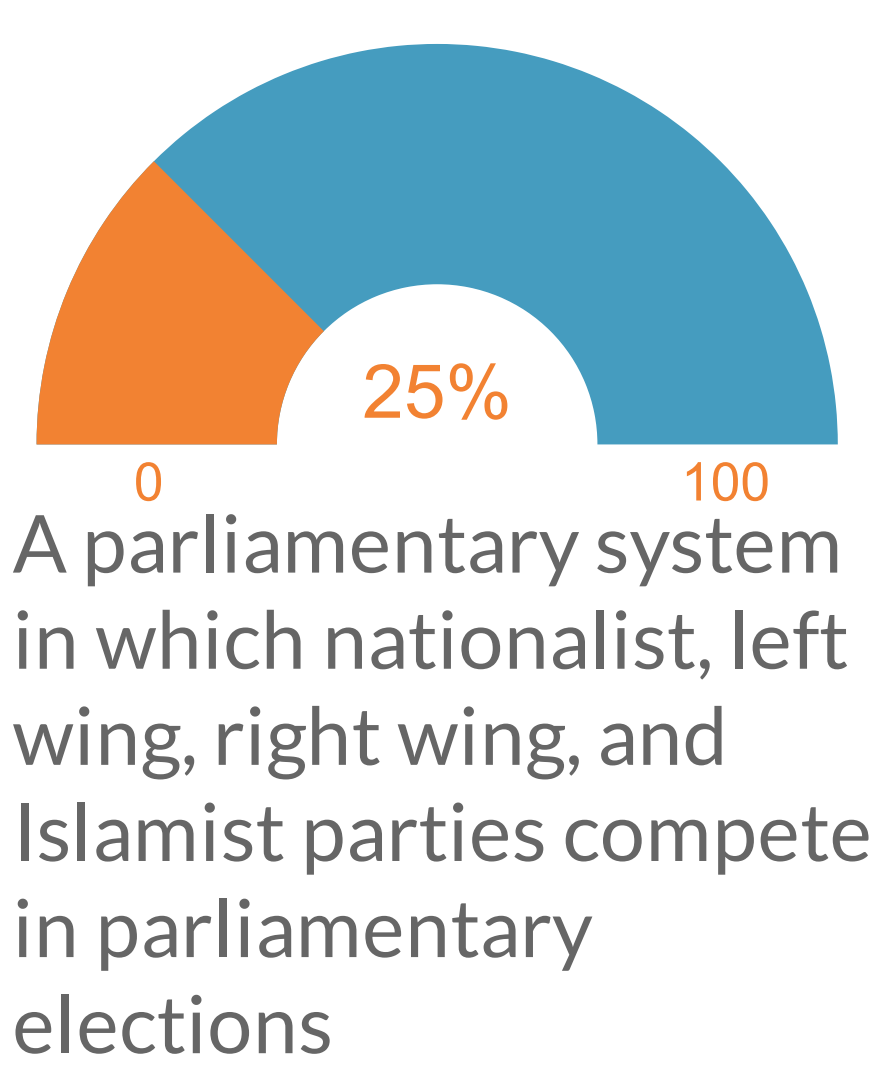
## WHICH OF THE EXISTING PARTIES IS CLOSEST TO REPRESENTING YOUR POLITICAL, SOCIAL AND ECONOMIC ASPIRATIONS?



sample size = 150

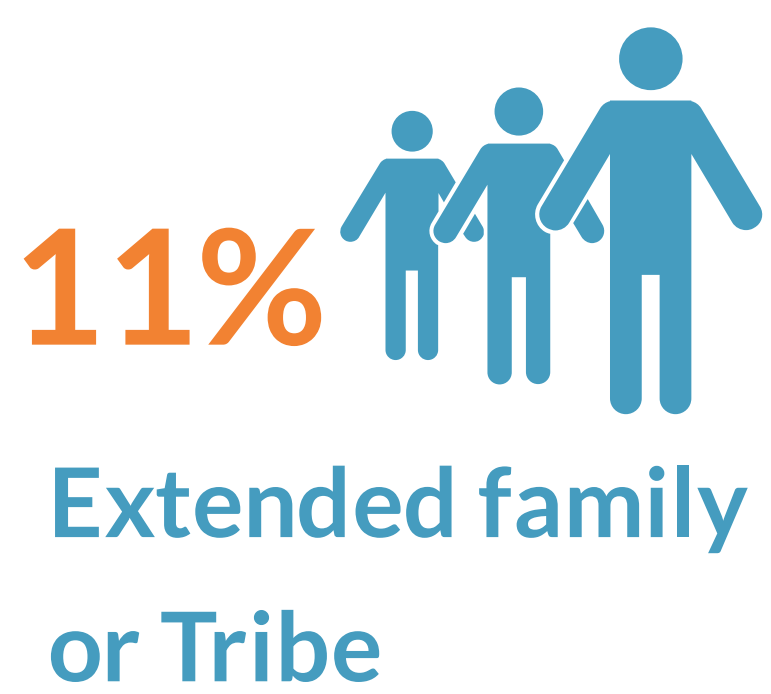
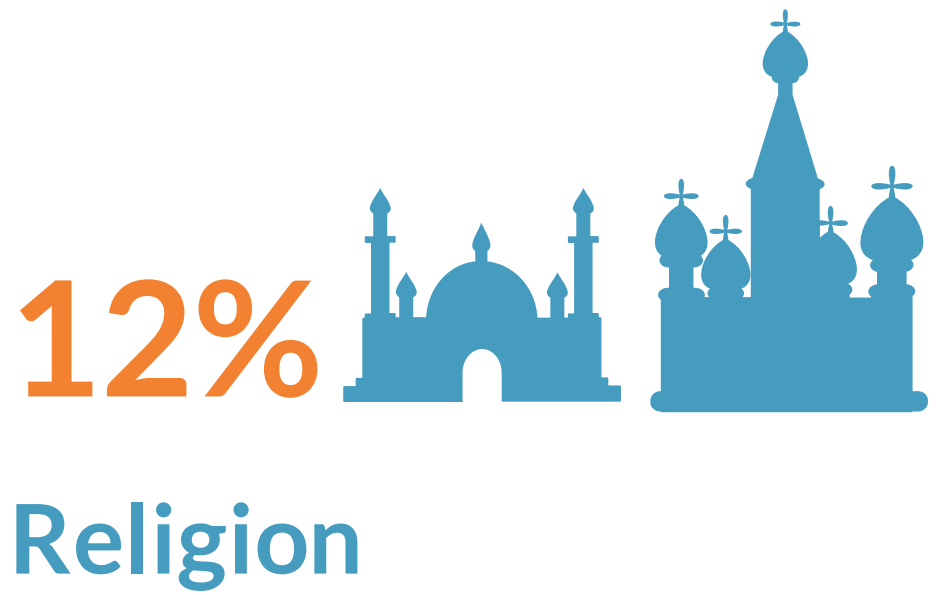
## WHICH PARLIAMENTARY SYSTEM IS PREFERABLE IN LEBANON ?

Opinions in Beqaa, Baalbek & Hermel Governorates - 2016



## HOW DO PEOPLE IN BEQAA, BAALBEK & HERMEL GOVERNORATES SELF-IDENTIFY ? 2016

**58%**  
Lebanese



**7%**  
Arab

