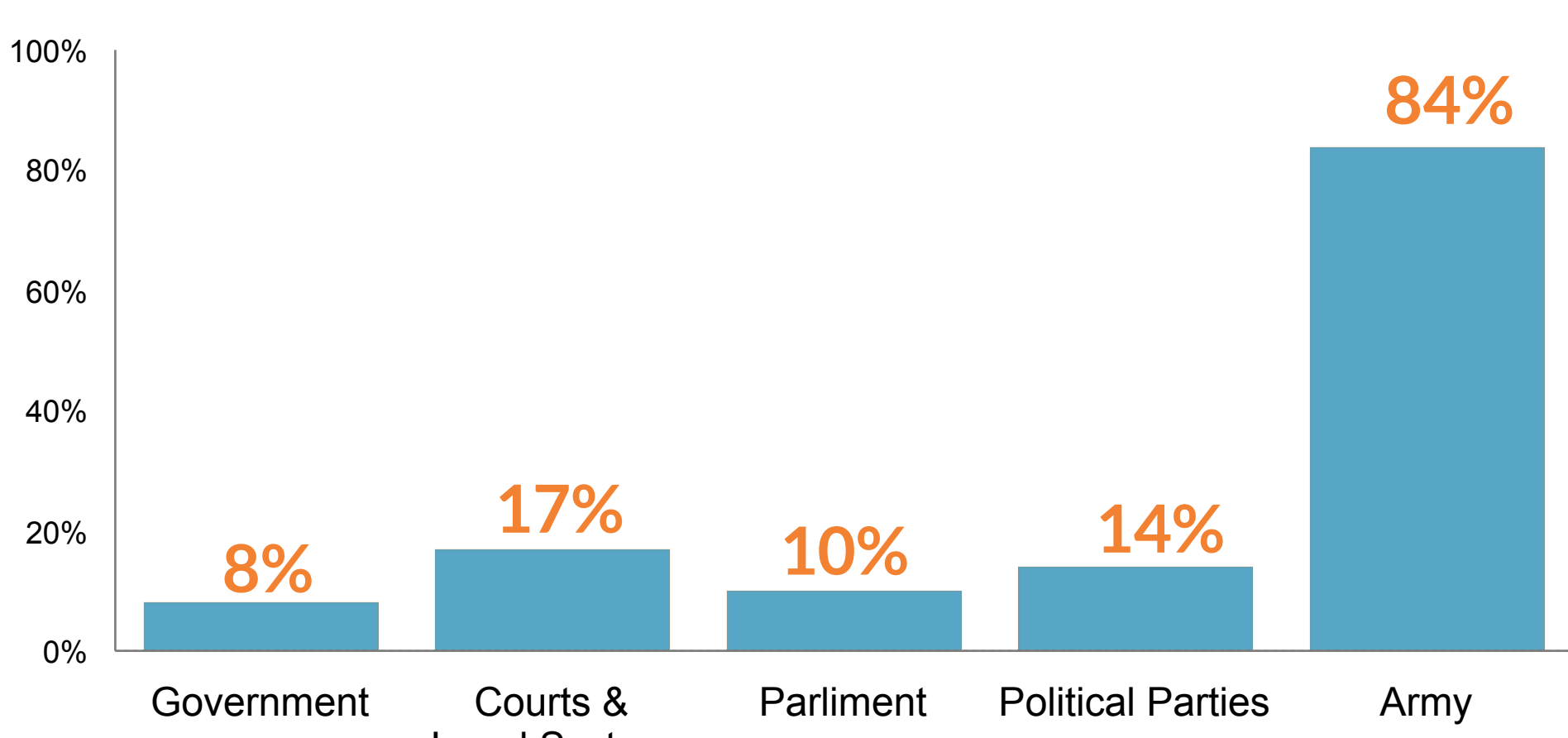


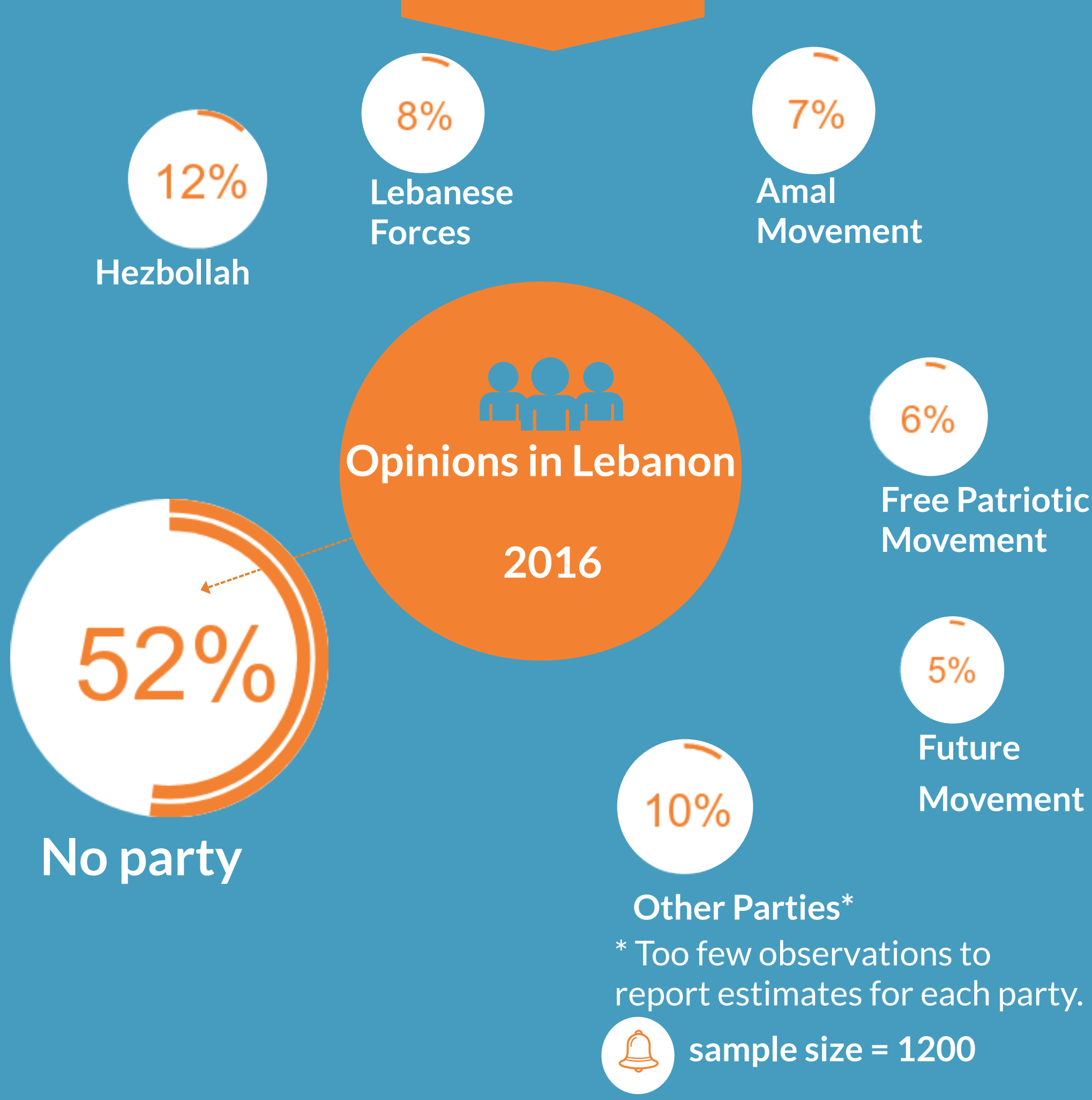
TRUST IN PUBLIC INSTITUTIONS  
Opinions in Lebanon  
2016



% People in Lebanon who trust public institutions - 2016

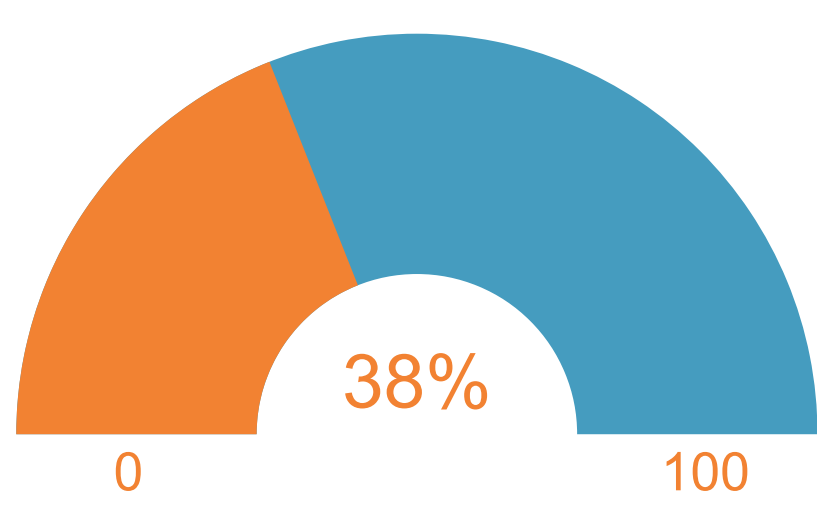


WHICH OF THE EXISTING PARTIES IS CLOSEST TO REPRESENTING YOUR POLITICAL, SOCIAL AND ECONOMIC ASPIRATIONS?

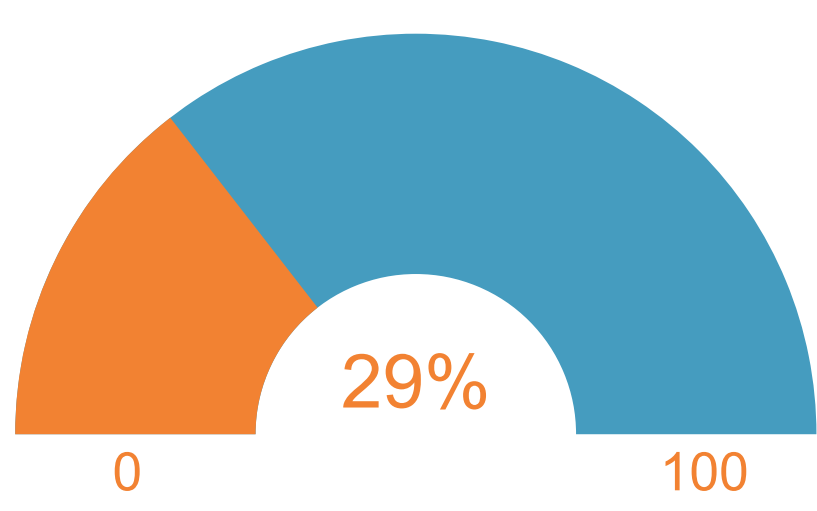


WHICH PARLIAMENTARY SYSTEM IS PREFERABLE IN LEBANON ?

Opinions in Lebanon - 2016



A parliamentary system in which nationalist, left wing, right wing, and Islamist parties compete in parliamentary elections



A parliamentary system in which only non-religious parties compete in parliamentary elections

HOW DO PEOPLE IN LEBANON SELF- IDENTIFY ?

2016

79%  
Lebanese

