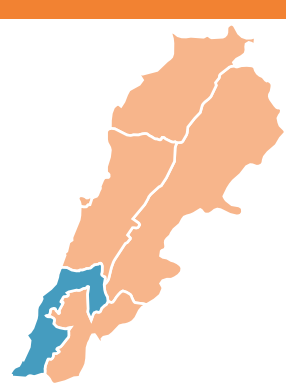


# HOW DO PEOPLE IN SOUTH GOVERNORATE EVALUATE PUBLIC INSTITUTIONS IN LEBANON & HOW DO THEY SELF-IDENTIFY ?



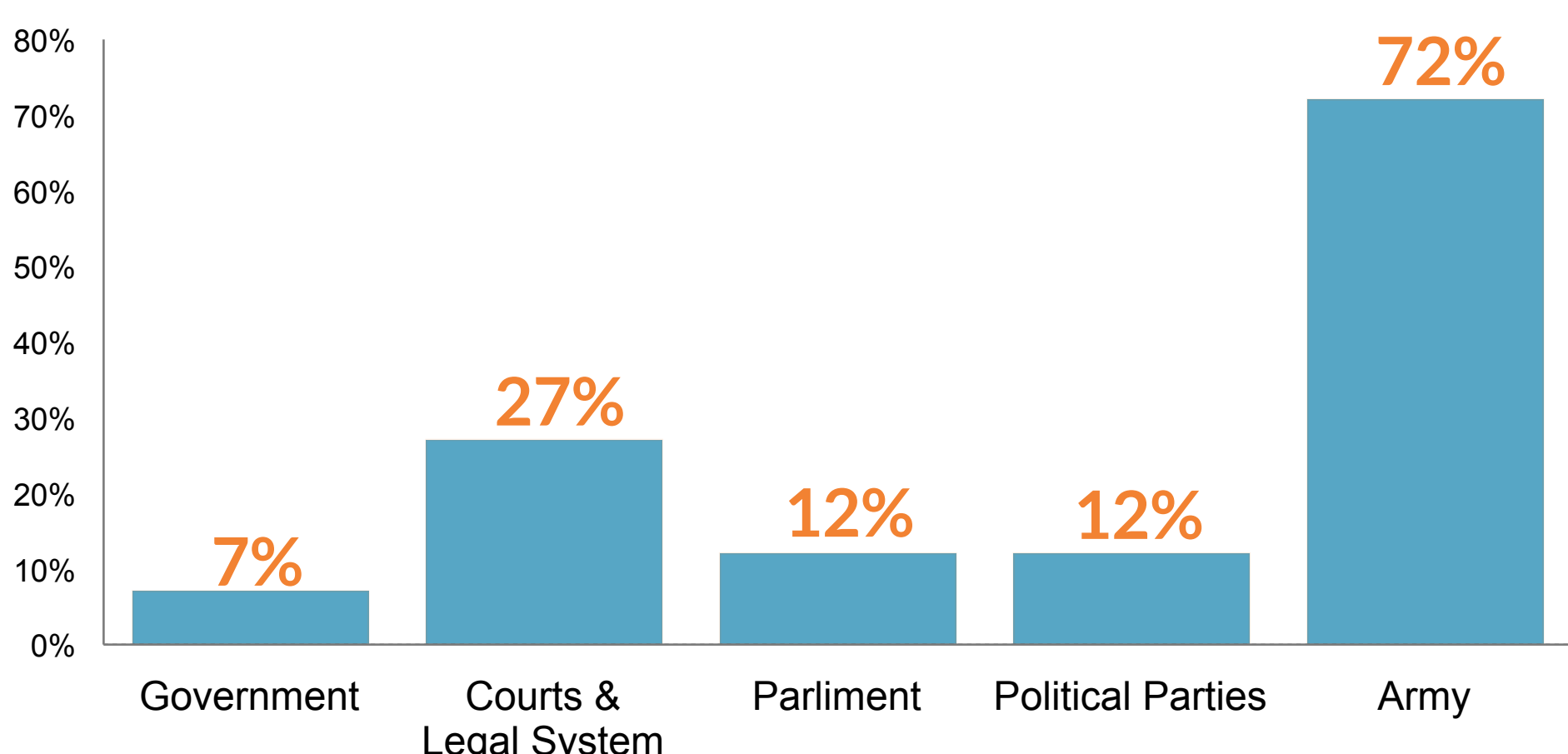
sample size = 130

## TRUST IN PUBLIC INSTITUTIONS Opinions in South Governorate - Lebanon 2016

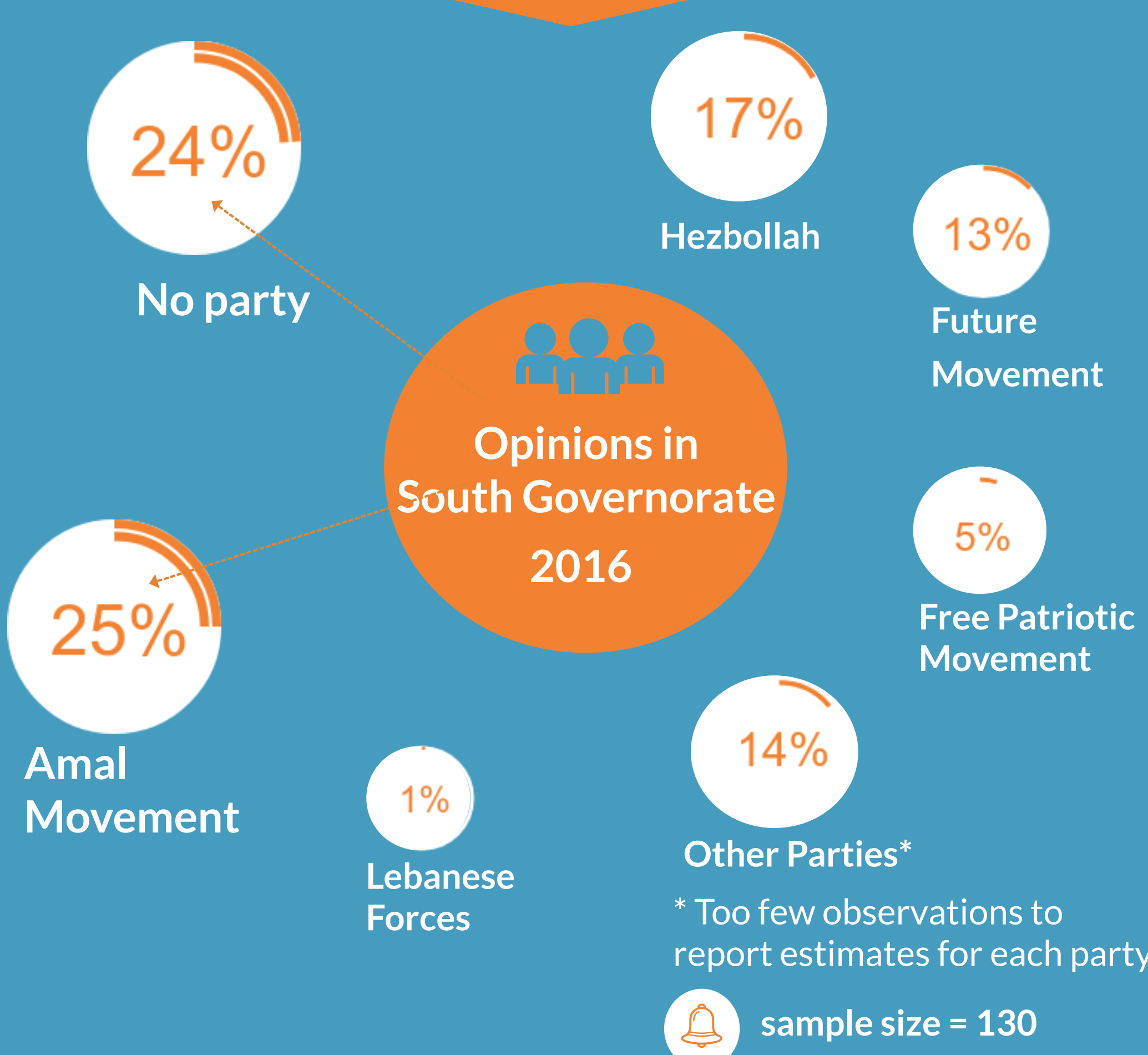


Trust

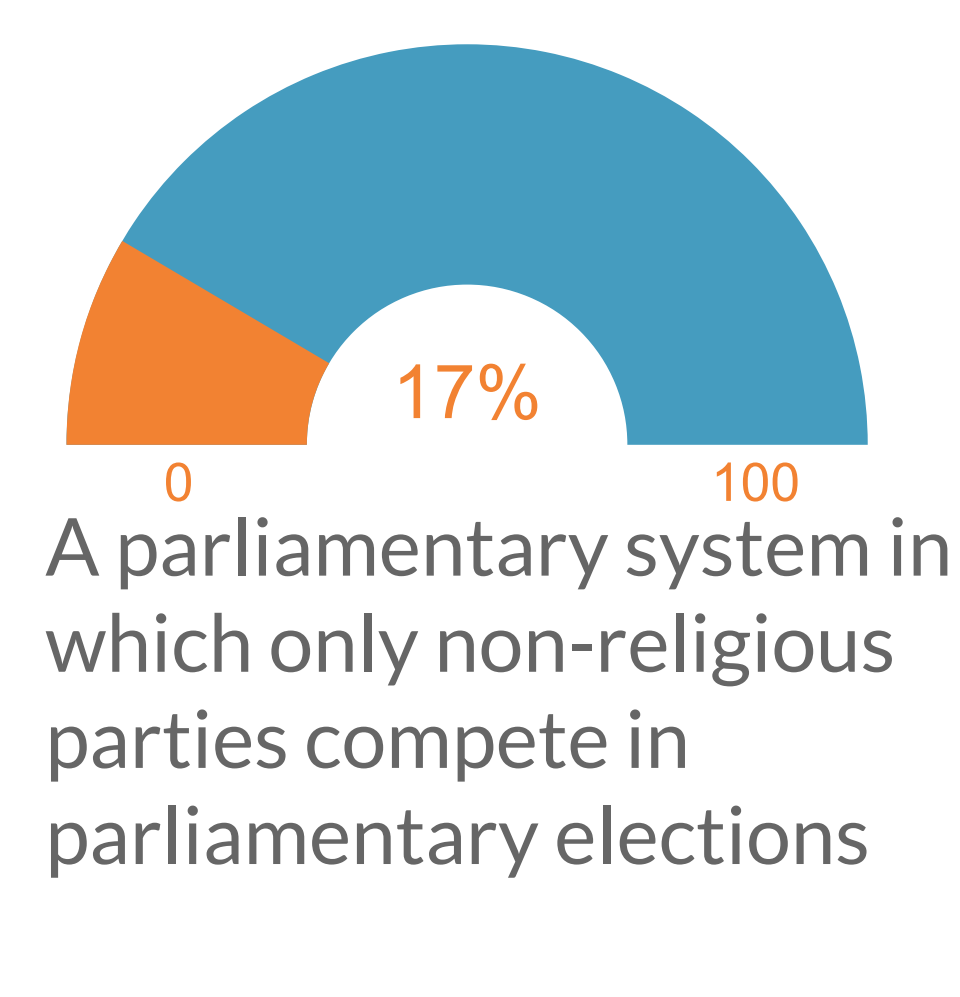
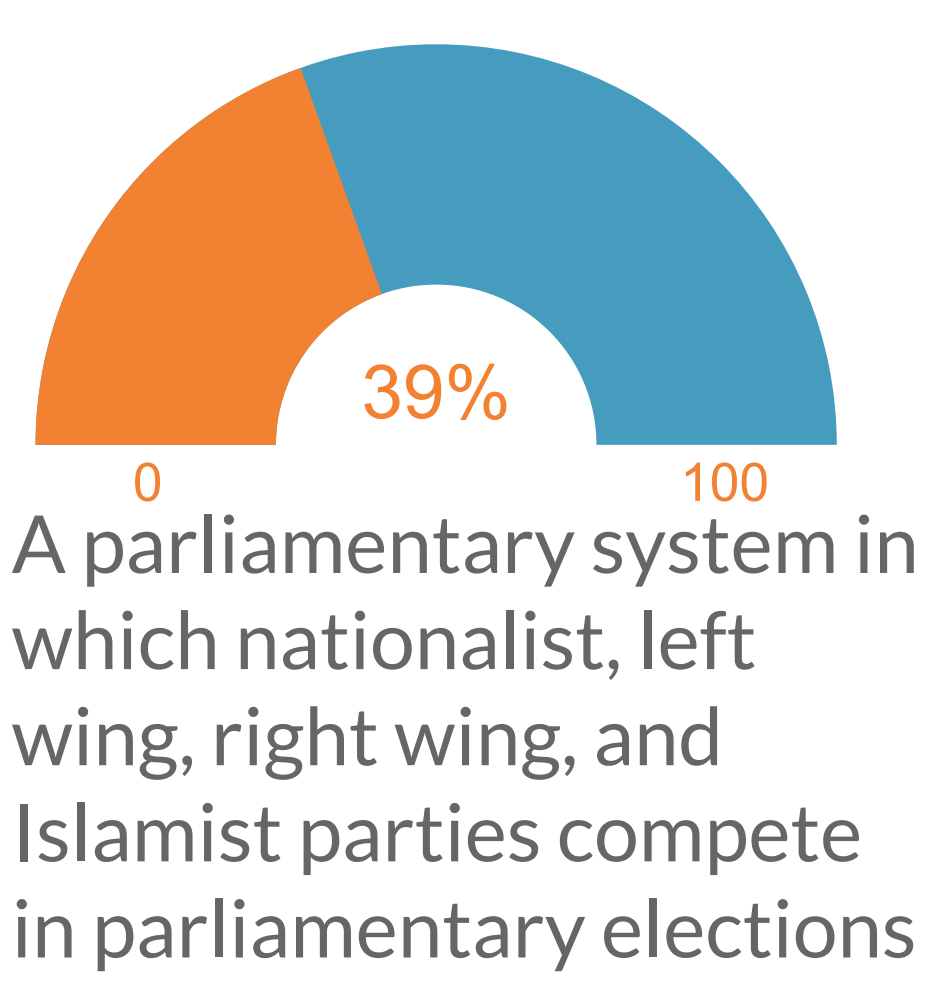
% People in South Governorate who trust public institutions - 2016



## WHICH OF THE EXISTING PARTIES IS CLOSEST TO REPRESENTING YOUR POLITICAL, SOCIAL AND ECONOMIC ASPIRATIONS?



## WHICH PARLIAMENTARY SYSTEM IS PREFERABLE IN LEBANON ? Opinions in South Governorate - 2016



## HOW DO PEOPLE IN SOUTH GOVERNORATE SELF-IDENTIFY ?

2016

91%  
Lebanese



7%  
Extended family or Tribe



1%  
community where they live



1%  
Religion

