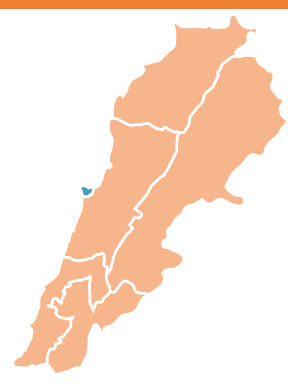


# HOW DO PEOPLE IN BEIRUT GOVERNORATE EVALUATE PUBLIC INSTITUTIONS IN LEBANON & HOW DO THEY SELF-IDENTIFY ?

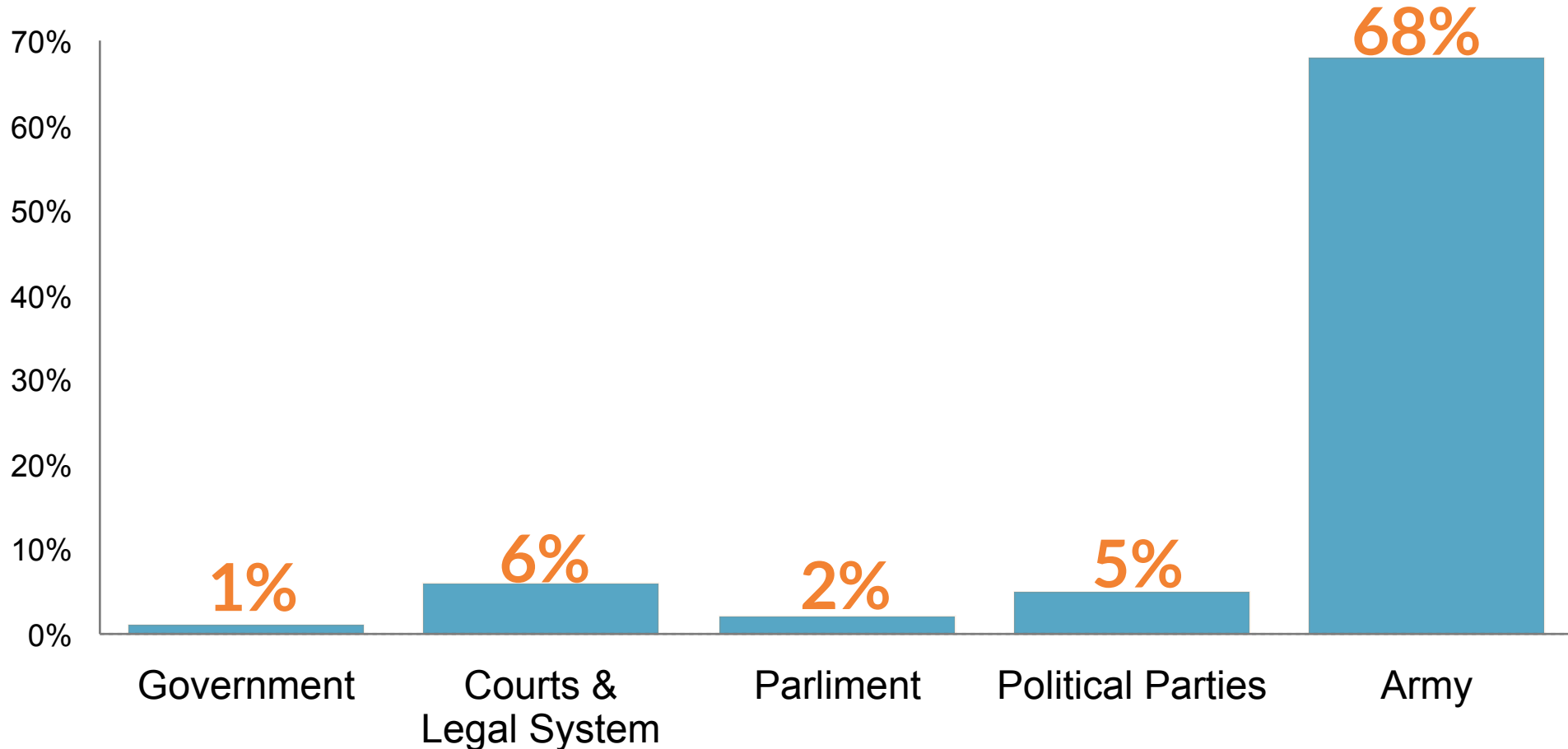


sample size = 130

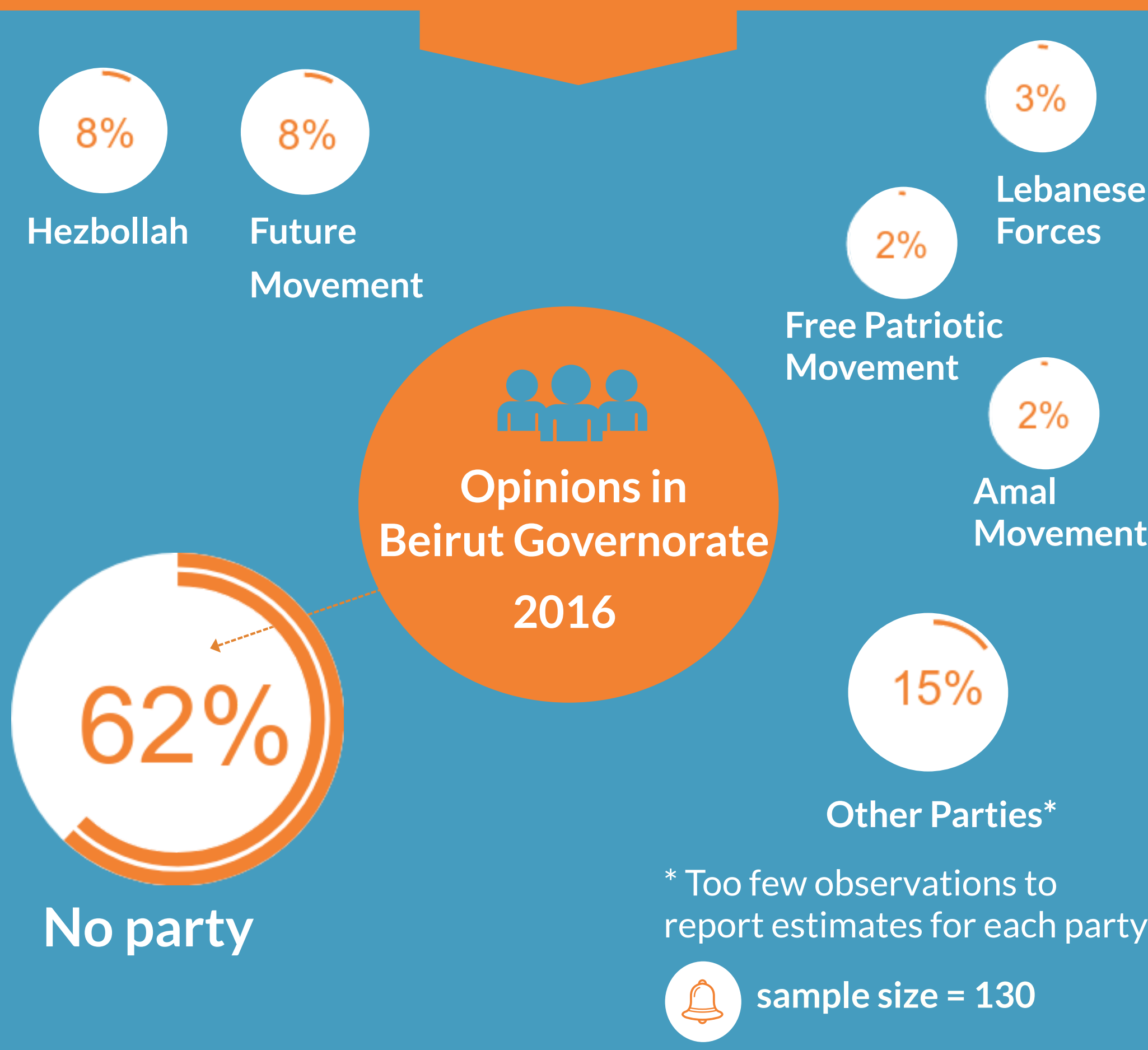
## TRUST IN PUBLIC INSTITUTIONS Opinions in Beirut Governorate 2016



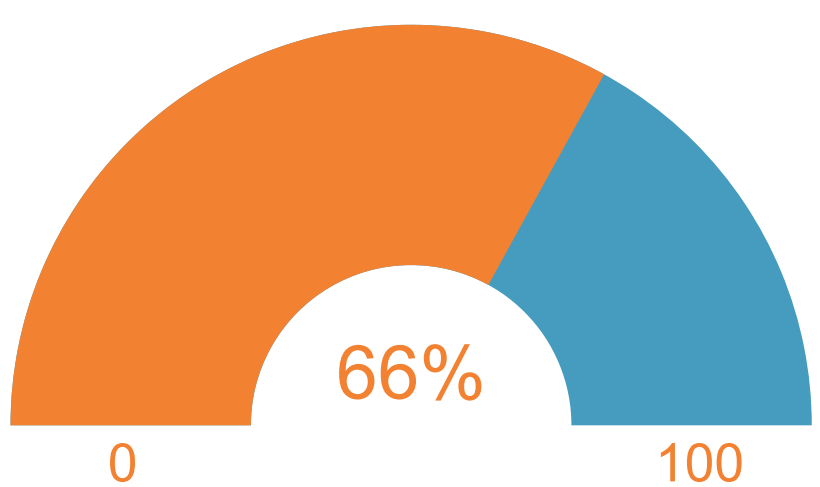
% People in Beirut governorate who trust public institutions - 2016



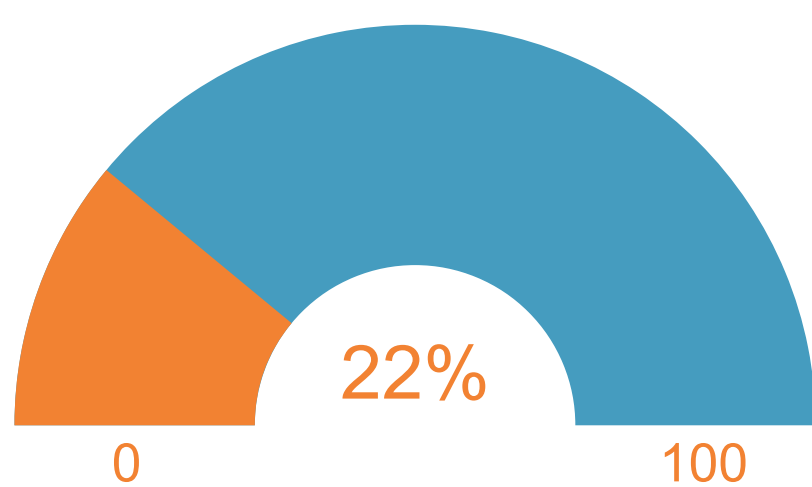
## WHICH OF THE EXISTING PARTIES IS CLOSEST TO REPRESENTING YOUR POLITICAL, SOCIAL AND ECONOMIC ASPIRATIONS?



## WHICH PARLIAMENTARY SYSTEM IS PREFERABLE IN LEBANON ? Opinions in Beirut Governorate - 2016



A parliamentary system in which nationalist, left wing, right wing, and Islamist parties compete in parliamentary elections



A parliamentary system in which only non-religious parties compete in parliamentary elections

## HOW DO PEOPLE IN BEIRUT GOVERNORATE SELF-IDENTIFY ? 2016

